

Embarcadero® RAD Studio

Rapid Application Development for Native Windows and .NET

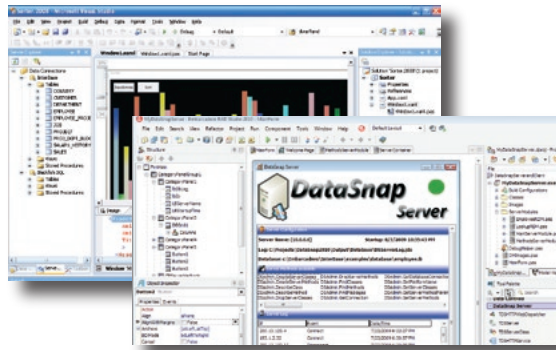


EMBARCADERO
TECHNOLOGIES®



Embarcadero® RAD Studio 2010 is a complete rapid application development solution for building native Windows®, .NET, Web, and database applications. RAD Studio includes Delphi®, C++Builder®, and Delphi Prism™, enabling you to build applications up to 5x faster across multiple Windows and database platforms.

Over two million developers choose RAD Studio tools because they radically speed desktop, workstation, touch, kiosk, and Web application development. RAD Studio tools include ultra-fast compilers, a visual drag-n-drop development environment for building UI-oriented applications, a rich visual component (VCL) framework, and unparalleled database and service connectivity. Plus, there are thousands of additional components available for jumpstarting any specialized application, technology, function, or task from a vibrant community of partners and developers. No other offering gives you the power, flexibility, and control to rapidly build high-quality, high-performance applications for so many platforms, data sources, application types, architectures, and users worldwide.



- RADically reduces development time
- Touch the Future
- Any database, architecture, or protocol

RADICALLY REDUCES DEVELOPMENT TIME

Programming with RAD Studio tools is more efficient than developing in other "rapid" development platforms such as Visual Basic, .NET, or Java. RAD Studio developers utilize the Visual Component Library (VCL) which encapsulates powerful pre-built functionality into simple reusable and extendable components. The VCL is fully integrated into the development environment and two-way visual designers. This makes it easy to manipulate components both visually and in code. As a result, applications built with the VCL framework require writing, debugging, and testing far fewer lines of code, often up to 5x fewer LOC in real-world apps for equivalent functionality – without sacrificing performance or capability. With the VCL, applications are higher quality and easier to maintain and enhance.

- RAD two-way visual development environment and VCL component framework
- Powerful and fast compilers with modern features such as generics, anonymous methods, and attributes
- Ultra-fast and small-footprint runtime performance, rich interactive user experiences, unparalleled database and service connectivity, and no cumbersome runtime environments like Visual Basic, or Java

TOUCH THE FUTURE

RAD Studio tools have built-in touch and gesturing support for multiple Windows platforms, making it the best way to build modern interactive touch and multi-touch applications, kiosks, tablets, point-of-sale (POS) systems, and more.

- Fine control – other tools put the developer at the mercy of the OS or desktop for touch support, but RAD Studio gives you control over how touch input works within your app at the form, container, and control level
- Multi OS support – works with Windows 7 as well as Windows Vista, XP, and 2000
- Flexible input support – single-touch, multi-touch, pen, and mouse support
- Rich gesture support – over 30+ standard gestures plus ability to design your own custom gestures
- Virtual Touch Keyboard with support for multi-locales

ANY DATABASE, ARCHITECTURE, OR PROTOCOL

RAD Studio's DataSnap® framework and dbExpress™ data access drivers enable you to build one system that can seamlessly connect to a variety of data sources while retaining vendor-specific database features and unencumbered native performance and control. So while other RAD tools limit you to a specific database or architecture, or rely on "universal" data connectivity options that sacrifice performance and control, RAD Studio's openness provides the flexibility and performance you need to build superior real-world applications.

- Native high-speed support for Microsoft SQL Server, InterBase, DB2, Oracle, Sybase, MySQL, Firebird, and more
- Flexible "build once – connect to many" dbExpress data access
- DataSnap with JSON, REST, COM, HTTP, TCP/IP and XML support for client/server and multi-tier connectivity with virtually any other system

Key Features for Windows Development

- Delphi & C++Builder IDEs with fast drag-n-drop design
- Over 250+ VCL controls
- Built-in touch and gesturing support with 30+ included gestures
- dbExpress with support for nine major databases, including InterBase®
- DataSnap n-tier middleware with JSON, REST, HTTP, COM, and XML
- Debugging support for multi-threaded applications
- UML/code metrics and audits
- Target Windows 2000, XP, Vista, and Windows 7 from single source

Key Features for .NET Development

- Delphi Prism programming language for .NET
- Visual Studio-based IDE included or install into Visual Studio
- Support for the latest .NET technologies
- .NET standard ADO.NET database connectivity, plus dbExpress for InterBase and Blackfish SQL
- Build DataSnap .NET clients
- ASP.NET development for web apps
- Target Windows, Linux, and Mac OS X using Mono

New! in RAD Studio 2010

- Windows 7 API, Direct2D, and multi-touch support
- Touch and gesturing for Windows 2000, XP, Vista, and Windows 7
- IDE Insight – instant access to any feature, setting, or component
- 120+ productivity enhancements
- Debug Visualizers
- Firebird dbExpress support
- Delphi 7 and C++Builder 6 style classic mode layout option with tabbed toolbar
- Powerful .NET and cross-platform Mono capabilities, including Aspect-Oriented programming and support for dynamic types in .NET 4.0

Feature	Description
Delphi 2010 and C++Builder 2010 for Native Windows Development	
High Productivity Integrated Development Environment	
Unicode-Enabled Code Editor	Provides color syntax highlighting, Code Insight, live code templates, class completion and refactoring to speed coding and reduce errors
IDE Productivity Tools	Includes project manager, visual designer, object inspector, structure view, tool palette, data explorer, SQL query builder, localization tools, and unit testing
Debugger	Enables full debugging down to assembly code level using configurable breakpoints and watch window plus remote debugging and new debugger visualizers and multi-threaded debugging options
Compilers and Libraries	
32-Bit Optimizing Delphi Compiler	Provides fast compilation and Delphi language support for Unicode, generics, and anonymous methods
C++ Compiler 6.20 (bcc32) and libraries	ANSI/ISO standard C++ compiler plus Dinkumware STL and Boost C++ libraries with TR1 support
Visual Component Library	Supports drag-and-drop development with hundreds of components including new ribbon controls
Touch and gesture interface support	Integrated VCL support for touch, gesture designer, virtual keyboard, and interactive multi-touch gestures for panning, zooming and rotating
Database Application Development, Access, and Design	
Database Connectivity and Database Drivers	Enterprise and Architect Editions provide remote and local connectivity to Oracle, Microsoft SQL Server, Informix, Sybase, InterBase, Firebird, Blackfish SQL, MySQL, DB2, and SQL Anywhere. Professional Edition provides local connectivity to InterBase, Blackfish SQL, and MySQL.
DataSnap	Rich multi-tier database application framework. Only available in Enterprise and Architect Editions
Blackfish SQL Database	Fully managed code, SQL-compliant, highly portable, and embedded database with royalty-free deployment license
InterBase SMP Developer Edition	Highly scalable, powerful, embeddable database with development license
Database Modeling and Design Tools	Helps you better understand database structures. Only available with Architect Edition
Complete Development Solution	
UML Modeling	Includes class diagrams with real time synchronization between models and source code. Architect Edition includes full UML support, including State Diagrams, Use Case Diagrams, Activity Diagrams, and more. Provides full support for "Gang of Four" design patterns
Bundled Tools	Includes Rave Reports, glyFX icon library, InstallAware Express installer and software from Embarcadero partners

System Requirements	
Native Windows Development	.NET Development
<ul style="list-style-type: none"> 1 GB RAM (2 GB+ recommended) 3 GB free hard disk space for Delphi 750 MB free hard disk space for prerequisites DVD-ROM drive 1024x768 or higher-resolution monitor Intel® Pentium® or compatible, 1.4 GHz minimum (2GHz+ recommended) Mouse or other pointing device Microsoft® Windows 7 Microsoft® Windows Vista™ SP1 (Requires Administrator rights) Microsoft® Windows XP Home or Professional (SP2 or SP3) Microsoft® Windows Server® 2003 (SP1) or 2008 Microsoft® Windows® 2000 Professional or Server (SP4) 	<ul style="list-style-type: none"> Minimum: 1.6 GHz CPU, 384 MB RAM, 1024x768 display, 5400 RPM hard disk Recommended: 2.2 GHz or higher CPU, 1024 MB or more RAM, 1280x1024 display, 7200 RPM or higher hard disk On Windows Vista: 2.4 GHz CPU, 768 MB RAM 1 GB of available space required on system drive 2 GB of available space required on installation drive (includes space for .NET Framework and SDK) Mouse or compatible pointing device Windows XP Service Pack 2 or above Windows Server 2003 Service Pack 1 or above Windows Server 2003 R2 or above Windows Vista Windows Server 2008 x86 x64 (WOW) Install standalone or integrated into Visual Studio 2008

Feature	Description
Delphi Prism 2010 for .NET Development	
Delphi Prism Language	
Delphi based language	Supports writing managed applications using a modern language with roots in Pascal and Object Pascal and familiar syntax for Delphi developers
Aspect Oriented Programming	Change the behavior of code, add or remove fields, properties, events or methods and even extra classes
Parallel Programming Features	Includes futures, parallel loops, asynchronous code blocks, locked/locking directives for parallel programming and support for the new parallel libraries of .NET 4.0
LINQ Query Expressions	Combines the querying capabilities of database languages such as SQL and applies it to any type of data, natively within the Delphi Prism language
Property Notifications	Makes it easy to develop solutions that follow the model/view/controller design pattern
Target Multiple Platforms	
.NET 1.1, 2.0, 3.0, 3.5 and 4.0	Provides flexibility to target multiple .NET versions
Mono 2.0 for Windows, Linux and Mac OS X	Supports multi-platform deployment of applications using Mono, an open source implementation of a .NET compatible runtime and toolset
Integrated Design Environment (IDE) and Visual Studio Integration	
Installation Options	Provides the flexibility to install as a standalone application using the included Visual Studio 2008 Shell or integrate seamlessly with an existing install of the Visual Studio IDE
Windows Forms, WPF and ASP.NET Form Designers	Enable visual design of Windows desktop and Web applications
Code Editor with IntelliSense, and Integrated Debugging	Speed coding with a code editor that completes statements and code fragments using pop-ups and auto-completion; and quickly find and fix errors with a full set of debugging tools
Web Application Development	
ASP.NET development	Delphi Prism provides extensive support for the ASP.NET 2.0 project system provided with Visual Studio including new support for ASP.NET MVC and a dbExpress ASP provider for ASP.NET
Database Application Development, Access and Design	
ADO.NET Connectivity to Blackfish SQL and InterBase	Enterprise and Architect Editions support local and remote server connectivity. Professional Edition supports local connectivity
DataSnap	Build .NET DataSnap client applications that access native Delphi DataSnap servers. Only available in Enterprise and Architect Editions.

Product Editions
Professional
<ul style="list-style-type: none"> Designed for software developers and teams building native Windows, .NET, and touch-screen applications with (or without) embedded and local database persistence.
Enterprise
<ul style="list-style-type: none"> For building client/server, multi-tier, and Web applications – offers seamless connectivity with a variety of database servers and enterprise data sources, expanded UML modeling, and a comprehensive tool set for delivering quality applications.
Architect
<ul style="list-style-type: none"> Combines data-driven rapid application development for native Windows and .NET with rich visual data modeling to help developers understand, design, and get the most value out of enterprise databases and data structures.

Download a Free Trial at www.embarcadero.com

Corporate Headquarters | Embarcadero Technologies | 100 California Street, 12th Floor | San Francisco, CA 94111 | www.embarcadero.com | sales@embarcadero.com